

公司有权保留对机器技术参数的修改，恕不另行通知。
Our company reserves the right to change technical characteristics without further notice.

 Machinery
Equipment
Catalogue
Copyright For Debang

Debang Focus on Plastic Machinery Manufacturing

德邦专注**塑料机械**制造

Debang Product Catalog

 **DEBONCONVEYOR 德邦机械**

瑞安市德邦机械有限公司
Ruian Debang Machinery Co.,Ltd.

电话: 0577-6688 6398
手机: 150 5895 7998
传真: 0577-6688 6498
E-mail: 23541115@qq.com

www.dbjx168.com

浙江省温州瑞安市上望街道听潮路33号置信工业区D20栋
Building D20, Zhixin Industrial Zone, No. 33 Tingchao Road,
Shangwang Street, Ruian City, Wenzhou, Zhejiang Province

Tel: +86-577-6688 6398
Mob: +86-150 5895 7998
Fax: +86-577-6688 6498
E-mail: 23541115@qq.com



欲了解更多，请扫一扫

瑞安市德邦机械有限公司
Ruian Debang Machinery Co.,Ltd.

www.dbjx168.com

 **DEBONCONVEYOR 德邦机械**

专业的塑料机械制造商

Professional plastics machinery manufacturer

...

销往国家
Sold to countries

40+

生产线产品品种
Production line product variety

50+



瑞安市德邦机械有限公司专业生产各种塑料机械设备, 现已形成塑料机械, 印刷机生产线几大系列产品已达成五十多个品种, 主要产品有: SJ 系列高低吹膜机组; 双色彩条吹膜机; 凹凸扣自封袋彩条吹膜机组; SJ 系列聚丙烯稀吹膜机组, SJ 系列共挤吹膜机组; 高速四光控全自动封切制袋机; 电脑热切边封制 (OPP) 专用; 电脑辨色跟踪 (双层) 封切制袋机; 电脑跟踪热切整本制袋机; 旋转模头吹膜机组; 四色柔性凸版印刷机; 高速精密分条机; 电脑高速凸版印刷机; 再生塑料造料机; 自动制袋冲口一体机; 畅销全国各地, 并出口法国, 南非, 澳大利亚, 俄罗斯, 巴西, 尼日利亚等四十多个国家中东及东南亚和地区。

Ruian Debang Machinery Co., Ltd., specializing in the production of all kinds of plastic machinery and equipment, has been formed plastic machinery, printing machine production line of several major series of products Has reached more than 50 varieties, the main products are: SJ series high film blowing unit; Double color bar blowing machine; The self-sealing bag color bar blowing film unit; SJ series of polypropylene thin film units, SJ series of extru-blown film units; High speed four-light control automatic sealing and cutting bag machine; The computer is eager to seal (OPP) for special use; Computer color tracking (double layer) sealing and cutting bag machine; The computer keeps track of the eager whole bag making machine; Rotary die film unit; Four-color flexible relief printing machine; High speed precision dividing machine; Computer high speed letterpress printing press; Recycled plastic material making machine; Automatic bag punching machine; It sells well across the country, and also has more than 40 countries, including France, South Africa, Australia, Russia, Brazil and Nigeria.

1.

我们的责任

负责任是我们做事的基础。我们认为, 我们对德邦人有责任; 对德邦的创新精神有责任; 对周围的世界也有责任。无论我们做什么, 我们确信自己已经拥有坚固持久的基石。

Our responsibility

Being reliably is what brings us so far, not only to bear responsibility for our staff, but also for our innovation spirit and our surrounding environment. We are a truly believer in what has shaped us.

2.

我们的远见

有了远见才可能创新。我们鼓励任何基于德邦式的远见, 它让我们坚信每个人都应该有所贡献与见解。我们为达到更好的解决方案而竭尽所能。我们思考, 并付诸实践。

Our vision

Being visionary is elementary to being innovative. We encourage each of our staff to provide their own ideas and perspectives in offering the best solution for what our customer needs.

3.

我们的创新

创新是灵魂。创新使德邦变得独特。我们出色是由于我们能为客户提供按需应变的解决方案。我们从不畏惧困难并战胜每次挑战—我们的智慧要求我们不断前进。创新是德邦的灵魂。

Our innovation

Being innovative is the key element for us to stay flexible and creative in providing tailor-made services for our clients. It is what carries us further by rising up to every challenge among thousands of difficulties.

办公环境
Office Environment



DB-C75/90/105/120 系列高速吹膜机组 Series High Speed Film Blowing Machine Set	03
DB-75×2.85×1.75×2/2200 五层共挤上旋 IBC 吹膜复合机组 Five-Layer Co-Extrusion Horizontal Haul Off Ibc Film Blowing Laminating Machine Unit	04
DB-65×2.75×1/1800.75×2.90×1/2300 三层共挤 IBC 吹膜复合机组 Three-Layer Co-Extrusion Ibc Film Blowing Compounding Unit	06
DB-55×2.60×1/1500 HDPE-LDPE 三层共挤吹膜机组 Hdpe-Ldpe Three-Layer Co-Extrusion Film Blowing Machine	08
DB-50×2.60×1/1300 55×2.65×1/1600 60×2.70×1/1800 三层共挤上旋转机头吹膜复合机组 Three Layer Co-Extrusion Horizontal Haul Off Film Blowing Machine	10
3DB-A 三层共挤旋转机头吹膜复合机组 Three-Layer Common-Extruding Rotary Die Film Blowing Machine	12
2DB-A 系列两层共挤旋转机头吹膜机组 Series Double-Layer Co-Extrusion Rotary Die Film Blowing Machine Set	14
ABA 系列机组吹膜机 Series Film Blowing Machine	16
DB-A45-700/A50-900 背心袋高速吹膜机 Vest Bag High Speed Film Blowing Machine	18
DB-B50/55/60/65 系列升降旋转机头吹膜机 (PE 热收缩膜吹膜机) Rotary Die Head Film Blowing Machine Set (Pe Heat-Shrinkable Film Blowing Machine)	20
DB-B50/55/60/65 系列高低压超薄吹膜机 Pe High & Low-Pressure Film Blowing Machine	21
HD/LD/LLDPE 双机头吹膜机 Sj55-Fm600 Sj60-Fm700 Sj65-Fm800 Double-Head Film Blowing Machine	22
DB-45×2/50×2/55×2 双色彩条吹膜机 Double Color Film Blowing Machine	23
DB-D50/55 迷你型吹膜机 Mini Film Blowing Machine	24
DB-350×2/450×2 全自动高速制袋机 Full Automatic High Speed Tshirt Bag Making Machine	25
DB-800/900/1000 电脑热封冷切制袋机 Double Layer Automatic Bag Making Machine With Four Channels	26
DB-600-1200 电脑热封冷切制袋机 Computer Heat-Sealing & Cold-Cutting Bag-Making Machine	27
DB-600-800 电脑控制高速连卷背心袋制袋机 (双道) Computer Control High-Speed Vest Rolling Bag-Making Machine(Double Layer)	28
DB-600-1000 电脑热切制袋机 Computer Heat-Cutting Bag-Making Machine	29
DB-800/1000 快递袋上胶制袋一体机 Delivery Bag Making Machine	30
DB 系列凹版印刷机 Series Flexographic Printing Machine	31
DB600-1000 系列高速电脑凹版印刷机 Series High-Speed Computer Gravure Printing Machine	32
DB-600-1000 型系列凹版印刷机 Gravure Printing Machine	33
DB-D 高速塑料再生造粒机 High Speed Recycling Machine	34
HQ-150/300 料混炼造粒机 Plastic Grind Milling Granulator	35
DB-B90/100/110/120 风冷造粒机 X625 液压摇臂式截料机 F-1/3 塑料粉碎机 Air Cooled Granulator Hydraulic Pressure Punching Machine Plastic Grind Machine	36
AUXILIARY MODEL 辅助机型	37

DB-C75/90/105/120

系列高速吹膜机组 Series High Speed Film Blowing Machine Set

用途 / USE

用于吹制高低压聚乙烯，产品广泛用于复合膜，包装膜，农业复盖膜，纺织品，服装袋或膜等包装；主电机采用变频调速，增加了主机调速的稳定性，并可节电 30%，螺杆料筒采用 38 铬钼铝，经氮化处理，牵引机架采用升降式，不管吹大、小规格薄膜均能使其冷却效果达到更好。

It is used for blowing high-low pressure polyethylene, which has been widely used for producing laminating film, packing film, agricultural covering film, bag or film for textile and clothing and other packing material. The main motor adopts frequency control of motor speed to improve the speed regulating stability of main motor and save electricity by 30%. The screw and material barrel adopt 38 chrome-molybdenum aluminum which has been nitrogen treated and the traction frame adopts lifting type. No matter what size the film is, big or small, it can achieve the best effect of cooling.



主要技术参数 / MAIN TECHNICAL PARAMETER

型号	Model	DB-C75	DB-C90	DB-C105	DB-C120
螺杆直径	Screw diameter	75mm	90mm	105mm	120mm
螺杆长径比	Screw ratio(L/D)	30:1	30:1	30:1	30:1
螺杆转速	Screw speed	10-100r/min	10-100r/min	10-100r/min	10-100r/min
主机功率	Power of main motor	37Kw	45Kw	55-75Kw	75-95Kw
最大产量	Main output	120kg/h	150kg/h	190kg/h	220kg/h
薄膜最大折径	Max. folding width of film	1500mm	1800mm	2200mm	2500mm
薄膜单面厚度	Single-sided thickness of film	0.01-0.08mm	0.01-0.08mm	0.01-0.08mm	0.01-0.08mm
总功率	Total power	70Kw	85Kw	120Kw	150Kw
机器重量	Weight of machine	5.5T	8T	10T	12T
外形尺寸	Overall dimensions	7100× 3200× 6500mm	8050× 3550× 8000mm	9500× 4000× 9500mm	10200× 4200× 12000mm

DB-75x2、85x1、75x2/2200

五层共挤上旋 IBC 吹膜复合机组

Five-Layer Co-Extrusion Horizontal Haul Off Ibc Film Blowing Laminating Machine Unit



主要技术参数 / MAIN TECHNICAL PARAMETER

Model	型号	DB2200
Suitable material	适用原料	LDPE/LLDPE/MLDPE
Film width	产品宽度	1500-2000mm
Film thickness	产品厚度	0.02-0.15
Max.extrusion output	最大挤出量	100-500kg/h

Extruder	挤出机	
Screw diameter	螺杆直径	Φ75/75/85/75/75
Screw l/d length	螺杆长径比	32:1
Screw material	螺杆材料	38CrMoAl + 合金
Cylinder material	料筒材料	38CrMoAl
Cylinder cooling	料筒冷却	370w×4
Driving motor	主机功率	45kw×4/75kw×1
Temperature control	料筒温度控制	4/5
Average power-consume	平均耗电量	260kw

Type of die	模头	
Die size	模口	IBCΦ500mm
Temperature control	温度控制	6
Air ring	风环	1
Air blower	风机	主风机 30kw,IBC 进出换风 7.5kw×2

Take-up unit	引取装置	
Roller width	牵引辊宽	2200mm
Effective width	有效引取膜宽	2000mm
Take-up speed	引取速度	10-80m/min
Take-up motor	引取电机功率	3kw

Winding unit	收卷装置	
Fully automatic surface friction	全自动表面摩擦式	SURFACE FRICTION TYPE FRICCIÓN DE SUPERFICIE
Winding motor	卷取功率	3kw
Winding speed	卷取速度	10-80m/min
Overall dimension(L×W×H)	整机外形尺寸	10500×9500×14500mm

选择性配备 / OPTIONAL EQUIPMENT

1. 自动吸料机 2. 表面处理 3. 液压式快换网装置 4. 自动称重系统

1.AUTO LOADER 2.FILM SURFACE TREATER 3.HYDRAULIC FAST-CHANGING DEVICE 4.AUTOMATIC WEIGHING SYSTEM

DB-65×2、75×1/1800、75×2、 90×1/2300

三层共挤 IBC 吹膜复合机组
Three-Layer Co-Extrusion Ibc Film Blowing Compounding Unit



主要技术参数 / MAIN TECHNICAL PARAMETER

Model	型号	DB-65×2、75×1/1800	DB-75×2、90×1/2300
Suitable material	适用原料		LDPE/LLDPE/MLDPE
Film width	产品宽度	500-1600mm	500-2100mm
Film thickness	产品厚度	0.02-0.15	0.02-0.15
Max.extrusion output	最大挤出量	100-300kg/h	100-450kg/h

Extruder		挤出机	
Screw diameter	螺杆直径	Φ65/75/65	Φ75/90/75
Screw l/d length	螺杆长径比	32:1	32:1
Screw material	螺杆材料	38CrMoAl + 合金	38CrMoAl + 合金
Cylinder material	料筒材料	38CrMoAl	38CrMoAl
Cylinder cooling	料筒冷却	370w× 3/4	370w× 4/5
Driving motor	主机功率	37kw× 2/45kw× 1	45kw× 2/75kw× 1
Temperature control	料筒温度控制	3/4	4/5
Average power-consume	平均耗电量	120kw	180kw

Type of die		模 头	
Die size	模 口	IBCΦ350-Φ400mm	IBCΦ400-Φ450mm
Temperature control	温度控制	5	5
Air ring	风 环	1	1
Air blower	风 机	主风机 18.5kw, IBC 进出换风 5.5kw× 2	主风机 22kw, IBC 进出换风 7.5kw× 2

Take-up unit		引取装置	
Roller width	牵引辊宽	1800mm	2300mm
Effective width	有效引取膜宽	1600mm	2100mm
Take-up speed	引取速度	10-80m/min	10-80m/min
Take-up motor	引取电机功率	2.2kw	3kw

Winding unit		收卷装置	
Fully automatic surface friction	全自动表面摩擦式	SURFACE FRICTION TYPE FRICTION DE SUPERFICIE	
Winding motor	卷取功率	2.2kw	3kw
Winding speed	卷取速度	10-80m/min	10-80m/min
Overall dimension(L× W× H)	整机外形尺寸	7500× 5500× 9500mm	8000× 6500× 10500mm

选择性配备 / OPTIONAL EQUIPMENT

1. 自动吸料机 2. 表面处理 3. 液压式快换网装置 4. 自动称重系统 5. 自动测厚风环

1.AUTO LOADER 2.FILM SURFACE TREATER 3.HYDRAULIC FAST-CHANGING DEVICE 4.AUTOMATIC WEIGHING SYSTEM
5.AUTOMATIC THICKNESS MEASURING WIND RING

DB-55x2、60x1/1500

HDPE-LDPE 三层共挤吹膜机组

Hdpe-Ldpe Three-Layer Co-Extrusion Film Blowing Machine



主要技术参数 / MAIN TECHNICAL PARAMETER

Model	型号	DB-55x 2-60x 1/1500
Suitable material	适用原料	LDPE/LLDPE/MLDPE
Film width	产品宽度	300-1400mm
Film thickness	产品厚度	0.02-0.15
Max.extrusion output	最大挤出量	60-220kg/h

Extruder		挤出机
Screw diameter	螺杆直径	φ55/60/55
Screw l/d length	螺杆长径比	32:1
Screw material	螺杆材料	38CrMoAl + 合金
Cylinder material	料筒材料	38CrMoAl
Cylinder cooling	料筒冷却	370w× 3
Driving motor	主机功率	30kw× 2/37kw× 1(伺服电机)
Temperature control	料筒温度控制	3/4
Average power-consume	平均耗电量	100kw

Type of die		模 头
Die size	模 口	HDPEφ120 LDPEφ220mm
Temperature control	温度控制	3
Air ring	风 环	1
Air blower	风 机	11kw

Take-upunit		引取装置
Roller width	牵引辊宽	1500mm
Effective width	有效引取膜宽	1400mm
Take-up speed	引取速度	10-80m/min
Take-up motor	引取电机功率	3.7kw

Winding unit		收卷装置
Type	表面摩擦式	SURFACE FRICTION TYPEFRICCION DE SUPERFICIE
Winding motor	卷取功率	1.5kw
Winding speed	卷取速度	10-80m/min
Overall dimension(Lx Wx H)	整机外形尺寸	7500× 5500× 8200mm

选择性配备 / OPTIONAL EQUIPMENT

1. 自动吸料机 2. 表面处理 3. 液压式快换网装置 4. 自动米克重

1.AUTO LOADER 2.FILM SURFACE TREATER 3.HYDRAULIC FAST-CHANGING DEVICE 4.AUTOMATIC MICK WEIGHT

DB-50×2、55×1/1300 55×2、65×1/1600 60×2、70×1/1800

三层共挤上旋转机头吹膜复合机组
Three Layer Co-Extrusion Horizontal Haul Off Film Blowing Machine



主要技术参数 / MAIN TECHNICAL PARAMETER

Model	型号	DB-50×2、55×1/1300	DB-55×2、65×1/1600	DB-60×2、70×1/1800
Suitable material	适用原料		LDPE/LLDPE/MLDPE	
Film width	产品宽度	300-1200mm	500-1500mm	600-1700mm
Film thickness	产品厚度	0.02-0.15	0.02-0.15	0.02-0.15
Max.extrusion output	最大挤出量	60-90kg/h	80-120kg/h	100-150kg/h

Extruder		挤出机		
Screw diameter	螺杆直径	Φ50/55/50	Φ55/65/55	Φ60/70/60
Screw l/d length	螺杆长径比	32:1	32:1	32:1
Screw material	螺杆材料	38CrMoAl + 合金	38CrMoAl + 合金	38CrMoAl + 合金
Cylinder material	料筒材料	38CrMoAl	38CrMoAl	38CrMoAl
Cylinder cooling	料筒冷却	370w×2	370w×2	370w×3
Driving motor	主机功率	15kw×2/18.5kw×1	18.5kw×2/30kw×1	22kw×2/37kw×1
Temperature control	料筒温度控制	3	3	4
Average power-consume	平均耗电量	80kw	90kw	125kw

Type of die		模头		
Die size	模口	Φ200-Φ300mm	Φ250-Φ350mm	Φ300-Φ400mm
Temperature control	温度控制	3	3	3
Air ring	风环	1	1	1
Air blower	风机	5.5kw	7.5kw	11kw

Take-up unit		引取装置		
Roller width	牵引辊宽	1300mm	1600mm	1800mm
Effective width	有效引取膜宽	1200mm	1500mm	1700mm
Take-up speed	引取速度	10-65m/min	10-65m/min	10-65m/min
Take-up motor	引取电机功率	1.5kw	2.2kw	2.2kw

Winding unit		收卷装置		
Type	表面摩擦式		SURFACE FRICTION	TYPE FRICCION DE SUPERFICIE
Winding motor	卷取功率	1.5kw	1.5kw	2.2kw
Winding speed	卷取速度	10-60m/min	10-60m/min	10-60m/min
Overall dimension(L×W×H)	外形尺寸	7500×5500×8000mm	8000×6500×9000mm	8500×7500×10500mm

选择性配备 / OPTIONAL EQUIPMENT

1. 自动吸料机 2. 表面处理 3. 液压式快换网装置 4. 自动米克重

1.AUTO LOADER 2.FILM SURFACE TREATER 3.HYDRAULIC FAST-CHANGING DEVICE 4.AUTOMATIC MICK WEIGHT

3DB-A

三层共挤旋转机头吹膜复合机组 Three-Layer Common-Extruding Rotary Die Film Blowing Machine



主要技术参数 / MAIN TECHNICAL PARAMETER

Model	型号	DB-50× 2.55× 1/1100	DB-55× 2.65× 1/1300	DB-60× 2.70× 1/1600	DB-65× 2.75× 1/1800
Suitable material	适用原料		LDPE/LLDPE/MLDPE		
Film width	产品宽度	300-1000mm	400-1200mm	600-1500mm	800-1700mm
Film thickness	产品厚度	0.04-0.15	0.04-0.15	0.04-0.15	0.04-0.15
Max.extrusion output	最大挤出量	50-100kg/h	60-120kg/h	80-150kg/h	100-180kg/h

Extruder		挤出机			
Screw diameter	螺杆直径	Φ50/55/50	Φ55/65/55	Φ60/70/60	Φ65/75/65
Screw l/d length	螺杆长径比	32:1	32:1	32:1	32:1
Screw material	螺杆材料	38CrMoAl + 合金	38CrMoAl + 合金	38CrMoAl + 合金	38CrMoAl + 合金
Cylinder material	料筒材料	38CrMoAl	38CrMoAl	38CrMoAl	38CrMoAl
Cylinder cooling	料筒冷却	370w× 2	370w× 2	370w× 2	370w× 3
Driving motor	主机功率	15kw× 2/18.5kw× 1	18.5kw× 2/30kw× 1	22kw× 2/37kw× 1	30kw× 2/45kw× 1
Temperature control	料筒温度控制	3	4	4	5
Average power-consume	平均耗电量	50kw	65kw	80kw	105kw

Type of die		模 头			
Die size	模 口	Φ200-Φ300mn	Φ250-Φ350mn	Φ300-Φ400mn	Φ350-450mn
Temperature control	温度控制	3	3	3	3
Air ring	风 环	1	1	1	1
Air blower	风 机	5.5kw	5.5kw	7.5kw	11kw

Take-upunit		引取装置			
Roller width	牵引辊宽	159× 1100mm	159× 1300mm	159× 1500mm	159× 1700mm
Effective width	有效引取膜宽	1000mm	1200mm	1400mm	1600mm
Take-up speed	引取速度	10-65m/min	10-65m/min	10-65m/min	10-65m/min
Take-up motor	引取电机功率	1.5kw	1.5kw	2.2kw	2.2kw

Winding unit		卷取装置			
Type	表面摩擦式	SURFACE FRICTION TYPE FRICITION DESUPERFICIE			
Winding motor	卷取功率	10N.m	10N.m	16N.m	16N.m
Winding speed	卷取速度	10-65m/min	10-65m/min	10-65m/min	10-65m/min
Overall dimension(L× W× H)	外形尺寸	7500× 5500× 5500mm	7500× 5500× 6000mm	7500× 6000× 6500mm	8000× 7000× 8500mm

选择性配备 / OPTIONAL EQUIPMENT

1. 自动吸料机 2. 表面处理 3. 液压式快换网装置 4. 自动换卷装置 5. 自动米克重

1.AUTO LOADER 2.FILM SURFACE TREATER 3.HYDRAULIC FAST-CHANGING DEVICE 4.AUTO WINDER 5.AUTOMATIC MICK WEIGHT

2DB-A

系列两层共挤旋转机头吹膜机组 Series Double-Layer Co-Extrusion Rotary Die Film Blowing Machine Set



主要技术参数 / MAIN TECHNICAL PARAMETER

Model	型号	DB-50× 2/1100	DB-55× 2/1300	DB-60× 2/1500	DB-65× 2/1700
Suitable material	适用原料		LDPE/LLDPE/MLDPE		
Film width	产品宽度	300-1000mm	400-1200mm	500-1400mm	600-1600mm
Film thickness	产品厚度	0.03-0.15	0.03-0.15	0.03-0.15	0.03-0.15
Max.extrusion output	最大挤出量	40-60kg/h	50-85kg/h	60-100kg/h	80-120kg/h

Extruder		挤出机			
Screw diameter	螺杆直径	Φ50/50	Φ55/55	Φ60/60	Φ65/65
Screw l/d length	螺杆长径比	30:1	30:1	30:1	30:1
Screw material	螺杆材料	38CrMoAl + 合金	38CrMoAl + 合金	38CrMoAl + 合金	38CrMoAl + 合金
Cylinder material	料筒材料	38CrMoAl	38CrMoAl	38CrMoAl	38CrMoAl
Cylinder cooling	料筒冷却	370w× 2	370w× 2	370w× 2	370w× 3
Driving motor	主机功率	15kw× 2	18.5kw× 2	22kw× 2	30kw× 2
Temperature control	料筒温度控制	3	3	3	4
Average power-consume	平均耗电量	30kw	37kw	45kw	60kw

Type of die		模 头			
Die size	模 口	Φ200mm	Φ220mm	Φ250mm	Φ270mm
Temperature control	温度控制	2	2	2	2
Air ring	风 环	1	1	1	1
Air blower	风 机	4kw	5.5kw	5.5kw	7.5kw

Take-up unit		引取装置			
Roller width	牵引辊宽	159× 1100mm	159× 1300mm	159× 1500mm	159× 1700mm
Effective width	有效引取膜宽	1000mm	1200mm	1400mm	1600mm
Take-up speed	引取速度	10-65m/min	10-65m/min	10-65m/min	10-65m/min
Take-up motor	引取电机功率	1.5kw	1.5kw	2.2kw	2.2kw

Winding unit		卷取装置			
Type	表面摩擦式	SURFACE FRICTION TYPE FRICTION DE SUPERFICIE			
Winding motor	卷取功率	10N.m	10N.m	16N.m	16N.m
Winding speed	卷取速度	10-65m/min	10-65m/min	10-65m/min	10-65m/min
Overall dimension(L× W× H)	外形尺寸	2100× 1470× 1800mm	2100× 1750× 1800mm	2100× 1950× 1800mm	2100× 2150× 1800mm

选择性配备 / OPTIONAL EQUIPMENT

1. 自动吸料机 2. 表面处理 3. 液压式快换网装置 4. 自动换卷装置 5. 自动米克重

1.AUTO LOADER 2.FILM SURFACE TREATER 3.HYDRAULIC FAST-CHANGING DEVICE 4.AUTO WINDER 5.AUTOMATIC MICK WEIGHT



主要技术参数 / MAIN TECHNICAL PARAMETER

Model	型号	700	900	1100	1300
Suitable material	适用原料	HDPE/LDPE	HDPE/LDPE	HDPE/LDPE	HDPE/LDPE
Film width	产品宽度	100-600mm	150-800mm	300-1000mm	400-1200mm
Film thickness	产品厚度	0.005-0.08	0.005-0.08	0.005-0.08	0.005-0.08
Max.extrusion output	最大挤出量	40-60kg/h	50-70kg/h	60-80kg/h	60-90kg/h

Extruder		挤出机			
Screw diameter	螺杆直径	Φ45/50	Φ50/55	Φ55/60	Φ60/65
Screw l/d length	螺杆长径比	30:1	30:1	30:1	30:1
Screw material	螺杆材料	38CrMoAl + 合金	38CrMoAl + 合金	38CrMoAl + 合金	38CrMoAl + 合金
Cylinder material	料筒材料	38CrMoAl	38CrMoAl	38CrMoAl	38CrMoAl
Cylinder cooling	料筒冷却	370w× 2	370w× 2	370w× 2	370w× 3
Driving motor	主机功率	11kw× 1/15kw× 1	15kw× 1/18.5kw× 1	18.5kw× 1/22kw× 1	22kw× 1/30kw× 1
Temperature control	料筒温度控制	3	3	3	4
Average power-consume	平均耗电量	30kw	37kw	45kw	60kw

Type of die		模 头			
Die size	模 口	Φ60mn	Φ80mn	Φ120mn	Φ150mn
Temperature control	温度控制	2	2	2	2
Air ring	风 环	1	1	1	1
Air blower	风 机	2.2kw	2.2kw	3kw	4kw

Take-up unit		引取装置			
Roller width	牵引辊宽	159× 700mm	159× 900mm	159× 1100mm	159× 1300mm
Effective width	有效引取膜宽	600mm	800mm	1000mm	1200mm
Take-up speed	引取速度	10-65m/min	10-65m/min	10-65m/min	10-65m/min
Take-up motor	引取电机功率	1.5kw	1.5kw	2.2kw	2.2kw

Winding unit		卷取装置			
Type	表面摩擦式	SURFACE FRICTION TYPE FRICTION DE SUPERFICIE			
Winding motor	卷取功率	5N.m	10N.m	10N.m	16N.m
Winding speed	卷取速度	10-65m/min	10-65m/min	10-65m/min	10-65m/min
Overall dimension(L× W× H)	外形尺寸	5500× 2200× 4500mm	6000× 2500× 4700mm	6200× 2800× 5400mm	7000× 3000× 6000mm

选择性配备 / OPTIONAL EQUIPMENT

1. 自动吸料机 2. 表面处理 3. 液压式快换网装置 4. 自动换卷装置 5. 自动米克重

- 1.AUTO LOADER 2.FILM SURFACE TREATER 3.HYDRAULIC FAST-CHANGING DEVICE 4.AUTO WINDER 5.AUTOMATIC MICK WEIGHT

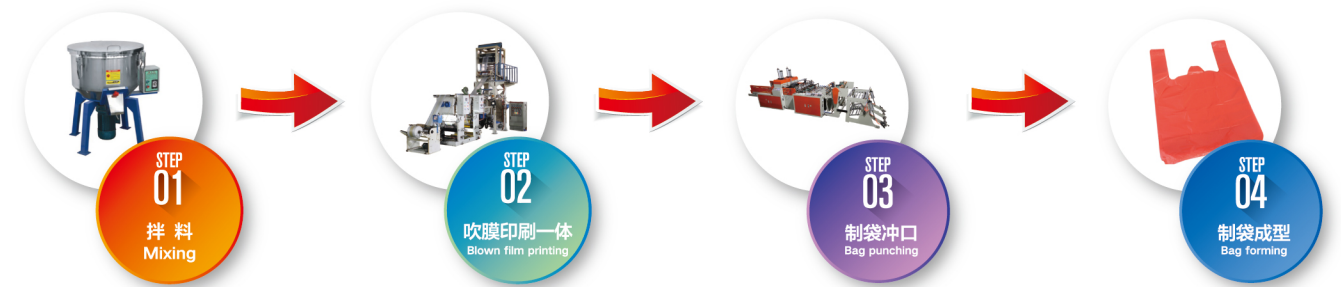
DB-A45-700/A50-900

背心袋高速吹膜机

Vest Bag High Speed Film Blowing Machine



生产流程 / PRODUCTION PROCESS



特点 / CHARACTERISTICS

本机组挤出机，机筒、螺杆均采用优质合金钢，经氮化处理和精密加工，具有更好的硬度和耐腐蚀性，特殊设计的螺杆产量高，塑化好。适用于吹制低密度聚乙烯（LDPE）高密度聚乙烯（HDPE）线性低密度聚乙烯（LLDPE）等塑料薄膜，广泛应用于食品、服装、垃圾袋、背心袋等民用及工业包装。

Its extruder, cylinder and screw rods are made of quality alloy steel that have been nitrided and processed in a precision way. Hence it is sound in hardness, durable in corrosion resistance. The specially-designed screw is of sound quality. In plasticizing, which helps increase the production capacity, it is applied to blowing the plastic films like low density polyethylene (LDPE), High density polyethylene (HDPE) and linear low density polyethylene (LLDPE). It is widely applied to producing the packing bags for foodstuff, clothing, rubbish bag and vest ones.

主要技术参数 / MAIN TECHNICAL PARAMETER

型号	Model	DB-45-700	DB-50-900
原料	Raw material	HDPE/LDPE	HDPE/LDPE
速度	Speed	0-150r/min	0-150r/min
吹膜宽度	Blown film width	150-600mm	150-800mm
吹膜厚度	Blown film thickness	0.006-0.08	0.006-0.08

螺杆直径	Screw diameter	45mm	50mm
螺杆长径比	Screw aspect ratio	28:1	28:1
螺杆材质	Screw material	38CrMoAl + 合金	38CrMoAl + 合金

主机功率	Host power	15kw	18.5kw
加热功率	Heating power	10kw	10kw
设备尺寸	Equipment size	4.5m×3m×4.2m	4.5m×3m×4.2m
产量	Yield	30-50kg/h	30-50kg/h
模口直径	Die diameter	50mm 80mm	60mm 100mm
风机	Fan	2.2kw	3kw

DB-B50/55/60/65

系列升降旋转机头吹膜机 (PE 热收缩膜吹膜机)

Rotary Die Head Film Blowing Machine Set
(Pe Heat-Shrinkable Film Blowing Machine)

选择性配备 /OPTIONAL EQUIPMENT

- | | |
|-----------|------------------------|
| 1. 自动吸料机 | 1.AUTO LOADER |
| 2. 表面处理 | 2.FILM SURFACE TREATER |
| 3. 快换网装置 | 3.Fast Screen Changer |
| 4. 自动换卷装置 | 4.AUTO WINDER |
| 5. 双风口风环 | 5.DOUBLE-LIP AIR RING |



用途 /USE

用于吹制高低压聚乙烯，产品广泛用于复合膜，包装膜，农业复盖膜，纺织品，服装袋或膜等包装；主电机采用变频调速，增加了主机调速的稳定性，并可节电 30%，螺杆料筒采用 38 铬钼铝，经氮化处理，牵引机架采用升降式，不管吹大、小规格薄膜均能使其冷却效果达到更好。

It is used for blowing high-low pressure polyethylene, which has been widely used for producing laminating film, packing film, agricultural covering film, bag or film for textile and clothing and other packing material. The main motor adopts frequency control of motor speed to improve the speed regulating stability of main motor and save electricity by 30%. The screw and material barrel adopt 38 chrome-molybdenum aluminum which has been nitrogen treated and the traction frame adopts lifting type.No matter what size the film is, big or small, it can achieve the best effect of cooling.

主要技术参数 /MAIN TECHNICAL PARAMETER

型号	Model	DB-B50	DB-B55	DB-B60	DB-B65
螺杆直径	Screw diameter	50mm	55mm	60mm	65mm
螺杆长径比	Screw ratio(L/D)	30: 1	30: 1	30: 1	30: 1
螺杆转速	Screw speed	10-100r/min	10-100r/min	10-100r/min	10-100r/min
主机功率	Power of main motor	11Kw	15Kw	18.5Kw	22Kw
最大挤出量	Main output	35Kg/h	50Kg/h	65Kg/h	80Kg/h
薄膜最大直径	Max. folding width of film	600mm	800mm	1000mm	1200mm
薄膜单面厚度	Single-sided thickness of film	0.01-0.10mm	0.01-0.10mm	0.01-0.10mm	0.01-0.10mm
总功率	Total power	22Kw	26Kw	30Kw	36Kw
机器重量	Weight of machine	2T	2.5T	3T	3.2T
外形尺寸	Overall dimensions	4000× 1800× 3600mm	4200× 2000× 4000mm	4600× 2300× 4200mm	4800× 2500× 4500mm

DB-B50/55/60/65

系列高低压超薄吹膜机

Pe High & Low-Pressure Film Blowing Machine

选择性配备 /OPTIONAL EQUIPMENT

- | | |
|-----------|---------------------|
| 1. 自动吸料机 | 1.AUTOLOADER |
| 2. 铸铝加热圈 | 2.CAST ALUM HEATER |
| 3. 气胀轴 | 3.AIR SHAFT |
| 4. 旋转模头装置 | 4.ROTARY DIE DEVICE |
| 5. 双工位收卷机 | 5.Double Winder |
| 6. 自动升降 | 6.UPANDDOWN |
| 7. 气缸压辊 | 7.PNEUMATIC DEVICE |



特点 /CHARACTERISTICS

本机组挤出机，机筒、螺杆均采用优质合金钢，经氮化处理和精密加工，具有更好的硬度和耐腐蚀性，特殊设计的螺杆产量高，塑化好。适用于吹制低密度聚乙烯 (LDPE) 高密度聚乙烯 (HDPE) 线性低密度聚乙烯 (LLDPE) 等塑料薄膜，广泛应用于食品、服装、垃圾袋、背心袋等民用及工业包装。

Its extruder, cylinder and screw rods are made of quality alloy steel that have been nitrized and processed in a precision way. Hence it is sound in hardness, durable in corrosion resistance.The specially-designed screw is of sound quality In plasticizing, which helps increase the production capacity, it is applied to blowing the plastic films like low density polyethylene(LDPE). High density polyethylene (HDPE) and linear low density polyethylene(LLDPE).It is widely applied to producing the packing bags for foodstuff, clothing, rubbish bag and vest ones.

主要技术参数 /MAIN TECHNICAL PARAMETER

型号	Model	50	55	60	65
螺杆直径	Diameter of Screw	φ50	φ55	φ60	φ65
薄膜折径	Reduced diameter of film	100-600mm	200-800mm	300-1000mm	400-1200mm
薄膜单面厚度	Single-face Thickness of film	0.01-0.10mm	0.01-0.10mm	0.01-0.10mm	0.01-0.10mm
最大挤出量	Max.Output	35Kg/h	50Kg/h	65Kg/h	80Kg/h
长径比	L/D	30:1	30:1	30:1	30:1
主机功率	Power of main motor	7.5-11Kw	11-15Kw	18.5-22Kw	22Kw
牵引电机功率	Power of Traction motor	1.1Kw	1.1Kw	1.5Kw	1.5Kw
加热功率	Heating Power	11Kw	13Kw	19Kw	21Kw
外形尺寸	Outline diameter (L× W× H)	4800× 1900× 3500mm	5500× 2100× 3800mm	6500× 2300× 4200mm	6500× 2500× 4600mm
机重	Weight	1.5T	2T	2.3T	2.6T

HD/LD/LLDPE

双机头吹膜机

Double-Head Film Blowing Machine

用途 /USE

用于吹制低密度聚乙烯(LDPE)、高密度聚乙烯(HDPE)塑料薄膜。可制成各种背心袋、平口袋、广泛应用于食品、服装、纺织、工业等包装。

This machine set is used for blowing Low-density polyethylene(LDPE) and high density polyethylene (HDPE) plastic film to make various vest bags and flat-rim bags which have been widely used for packing in the food industry, garment industry and textile industry, etc.



特点 /CHARACTERISTICS

挤出机的机筒、螺杆均采用优质合金钢经氮化和精密加工。具有更好硬度和耐腐蚀性，本机经科学设计一套挤出两付机头，提高生产率，节省能源、劳动力、生产厂房等优点。

Both the cylinder and the screw of the extruder are made of high quality alloy steel through nitration and precision finishing with the best hardness and corrosion resistance. Scientifically designed, this machine set has two heads for one extruder with such advantages as increasing production capacity, saving energy, labour and workshop area, etc.

主要技术参数 /MAIN TECHNICAL PARAMETER

型号	Model	DB-65FM-600	DB-70FM-700	DB-75FM-800
螺杆直径	Diameter of screw	65mm	70mm	75mm
螺杆长径比	Screw Ratio(L/D)	30:1	30:1	30:1
螺杆转速	Screw Speed	10-110r/min	10-110r/min	10-110r/min
最大产量	Max.Output	50kg/h	70kg/h	90kg/h
薄膜最大折径	Max.Folding Width of Film	550mm X2	650mm x 2	750mm x 2
薄膜单面厚度	Single-sided Thickness of Film	0.006-0.10mm	0.006-0.10mm	0.006-0.10mm
主机功率	Power of Main Motor	18.5-22kw	22-30kw	37kw
总功率	Total Power	40kw	55kw	70kw
机器重量	Weight of Machine	3000kg	3800kg	4500kg
外形尺寸	Overall Dimensions	4800x 2200x 3800mm	5000x 2400x 4000mm	5200x 2600x 4200mm

DB-45x2/50x2/55x2

双色彩条吹膜机

Double Color Film Blowing Machine

用途 /USE

用于吹制各种低密度聚乙烯(LDPE)、高密度聚乙烯(HDPE)彩条塑料薄膜。广泛应用于食品、水果、服装、纺织品、日用品等民用和工业品包装。SJ-45D x 2 挤出机的机筒、螺杆均采用优质合金钢，经氮化和精密加工。具有更好的硬度和耐腐蚀性。600 型辅机可根据不同物料的工艺要求在 600mm 范围内自由调节使用，并附有插板机构，能制作背心袋。卷取装置采用力矩电机，可保持适宜的张力，收卷整齐、换卷方便。

It is used for blowing various low density polyethylene (LDPE) and high density polyethylene(HDPE) colour striped plastic film, etc., which are widely used for packing food, fruit, garments, textile, daily necessities and other civil and industrial products. The cylinder and the screw stem of Model SJ-45D x 2 extruder are made of high-quality alloy steel with optimum hardness and strong corrosion resistance after precision finishing and nitrogen treatment. 600 auxiliary machine can be freely adjusted within the limits of 600mm according to the technological requirements of different materials, and has been fitted with a plug-in plate mechanism for making vest bag. The coiling unit adopts torque motor to keep proper tension and make rolling even and roll-changing easy.



主要技术参数 /MAIN TECHNICAL PARAMETER

型号	Model	45x 2	50x 2	55x 2
螺杆直径	Diameter of screw	Φ45x 2	Φ50x 2	Φ55x 2
薄膜折径	Rduced diameter of film	100-600mm	200-800mm	300-1000mm
薄膜单面厚度	Single-face Thickness of film	0.01-0.10mm	0.01-0.10mm	0.01-0.10mm
最大挤出量	Max.Extrusion	35Kg/h	50Kg/h	65Kg/h
长径比	L/D	30:1	30:1	30:1
主机功率	Power of main motor	15Kw	18.5Kw	22Kw
牵引电机功率	Power of Tracion main motor	1.5Kw	1.5Kw	1.5Kw
加热功率	Heating Power	15Kw	18Kw	25Kw
外形尺寸	Outline diameter(Lx Wx H)	4800x 1900x 4100mm	5500x 2100x 4700mm	6500x 2300x 4900mm
机量	Weight	2T	2.5T	3T

DB-D50/55

迷你型吹膜机 Mini Film Blowing Machine

用途 /USE

本机挤出机，机筒、螺杆均采用优质合金钢，经氮化处理和精密加工，具有更好的硬度和耐腐蚀性，特殊设计的螺杆产量高，塑化好。适用于吹制低密度聚乙烯(LDPE) 高密度聚乙烯(HDPE) 线性低密度聚乙烯(LLDPE) 等塑料薄膜，广泛应用于食品、服装、垃圾袋、背心袋等民用及工业包装。

Its extruder, cylinder and screw rods are made of quality alloy steel that have been nitrided and processed in precision way. Hence it is sound in hardness, durable in corrosion resistance. The specially-designed screw is of sound quality in plasticizing, which helps increase the production capacity, it is applied to blowing the plastic films like low density polytene (LDPE). High density polytene (HDPE) and linear low density polytene (LLDPE). It is widely applied to producing the packing bags for foodstuff, clothing, rubbish bag and vest ones.

选择性配备 /OPTIONAL EQUIPMENT

- | | |
|----------|--------------------|
| 1. 自动吸料机 | 1.AUTOLOADER |
| 2. 铸铝加热圈 | 2.CAST ALUM HEATER |
| 3. 气胀轴 | 3.AIR SHAFT |
| 4. 气缸压辊 | 4.PNEUMATIC DEVICE |

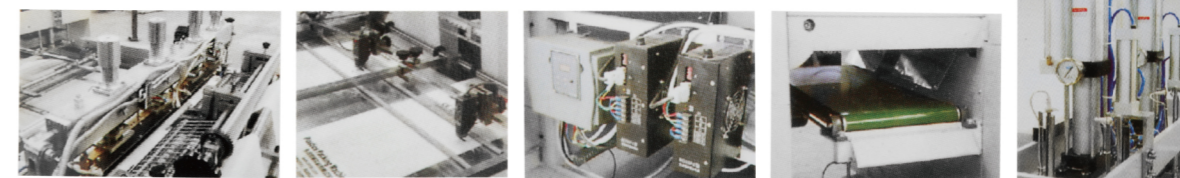


主要技术参数 /MAIN TECHNICAL PARAMETER

型号	Model	50	55
螺杆直径	Diameter of screw	Φ50	Φ55
薄膜折径	Rduced diameter of film	100-600mm	200-800mm
薄膜单面厚度	Single-face Thickness of film	0.01-0.10mm	0.01-0.10mm
最大挤出量	Max.Extrusion	35Kg/h	50Kg/h
长径比	L/D	30:1	30:1
主机功率	Power of main motor	7.5-11Kw	11-15Kw
牵引电机功率	Power of Tracion main motor	1.1Kw	1.1Kw
加热功率	Heating Power	11Kw	13Kw
外形尺寸	Outline diameter(L× W× H)	3800× 1900× 3000mm	5500× 2100× 3500mm
机量	Weight	1.5T	2T

DB-350×2/450×2

全自动高速制袋机 Full Automatic High Speed Tshirt Bag Making Machine



Sealing Knife× 2

Photocell× 2

Driver× 2

Waste Delivery

Cylinder× 2

特点 /CHARACTERISTICS

本机以 HDPE、LDPE 前质为原料可生产印刷、本色、背心袋，采用 PLC 控制、双伺服(步进)马达定长、液晶触摸屏实时显示，从送料、封底、切断、冲孔、输送一次性完成，自动化程度高，经济效益好。

This machine is applied to manufacturing and printing the uncolored vest bags made of HDPE, LDPE roll film. It adopts PLC control, double servo(step) motor fixed length and the liquid crystal touch screen actual display to finish the feeding, sealing, cutting, punching holes and transporting only in one process. It is high of degree of automation and good economic result.

主要技术参数 /MAIN TECHNICAL PARAMETER

型号	Model	DB-350× 2	DB-450× 2
最大制袋长度	Max.Bag-making length	600mm	600mm
制袋厚度	Bag-making thickness.	0.015-0.035mm	0.015-0.035mm
制袋速度	Bag-making speed	150-200 pcs/min× 2	150-200 pcs/min× 2
空气压力	Air pressure	5kg/cm ³	5kg/cm ³
总功率	Total power	7kw	9Kw
机器重量	Weight of machine	1400Kg	1600Kg
外形尺寸	Overall dimensions(L× W× H)	6000× 1400× 1600mm	6000× 1600× 1600mm

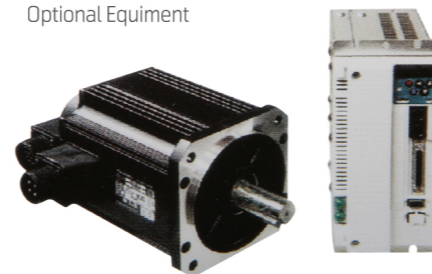
DB-800/900/1000

双层四道全自动制袋机

Double Layer Automatic Bag Making Machine With Four Channels



选择性配置
Optional Equipment



特点 / CHARACTERISTICS

制有印刷的背心袋、平口袋；主电机采用变频电机，使您更省电，调速更自如。良好性能的色标跟踪仪，使封切长度更准确，误差更小。采用先进的电脑，长度调整方便，精确。

It is used to produce vest bags and flat-opening bags with printing. The main motor adopts frequency converter motor which to save more electricity and regulate speed more freely. The color code tracker with good performance makes the sealing and cutting length more accurate and the error smaller. It adopts advanced computer to adjust length more freely and accurately.

主要技术参数 / MAIN TECHNICAL PARAMETER

袋宽 (本色)	Bag width (character)	150-350mm× 4
袋宽 (彩色)	Bag width (printed color)	150-800mm× 1
袋宽 (本色)	Bag length (character)	200X1200mm× 4
生产速度	Production speed	40-120pcs/min4
薄膜厚度	Thickness of film	0.01-0.08mm
功率	Power	5kw
整机重量	Gross weight	1300kg
型尺寸	Machine dimension (L× W× H)	6500× 1450× 2000mm

DB-600-1200

电脑热封冷切制袋机

Computer Heat-Sealing & Cold-Cutting Bag-Making Machine



Winder 选择性配件



特点 / CHARACTERISTICS

制有印刷的背心袋、平口袋；主电机采用变频电机，使您更省电，调速更自如。良好性能的色标跟踪仪，使封切长度更准确，误差更小。采用先进的电脑，长度调整方便，精确。

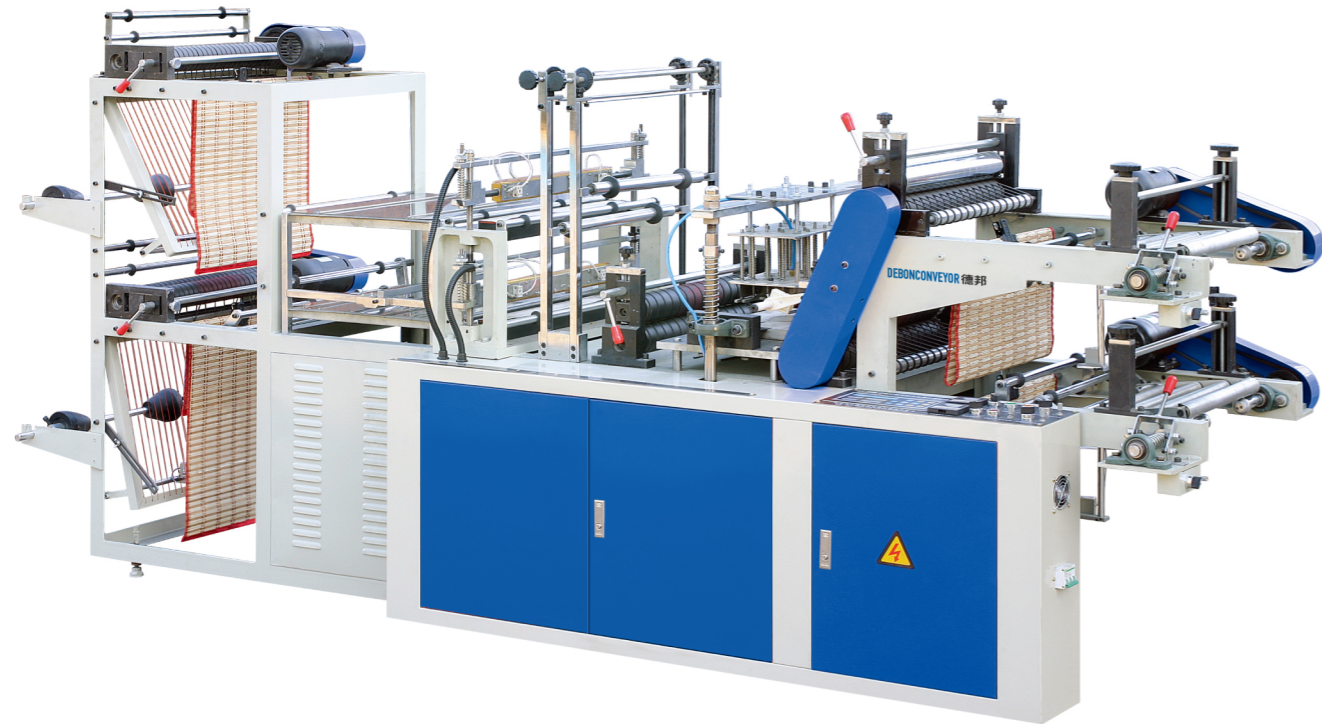
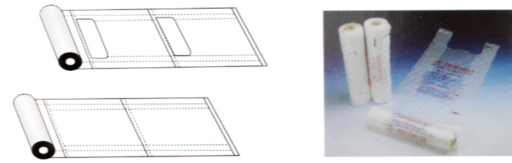
It is used to produce vest bags and flat-opening bags with printing. The main motor adopts frequency converter motor which to save more electricity and regulate speed more freely. The color code tracker with good performance makes the sealing and cutting length more accurate and the error smaller. It adopts advanced computer to adjust length more freely and accurately.

主要技术参数 / MAIN TECHNICAL PARAMETER

型号	Model	DB-600	DB-700	DB-800	DB-1000	DB-1200
制袋最大宽度	Max width of bag- making	600mm	700mm	800mm	980mm	1150mm
制袋最大长度	Max length of bag - making	1000mm	1000mm	1000mm	1200mm	2000mm
制袋速度	Speed of bag-making	30- 130pcs/min	30- 130pcs/min	30- 130pcs/min	30- 120pcs/min	30- 100pcs/min
主电机功率	Power of motor	1.1kw	1.1kw	1.5kw	2.2kw	3kw
机重	Weight	700kg	750kg	800kg	900kg	1000kg
外形尺寸	Outline dimension(L× W× H)	2900× 1300× 1500mm	2900× 1400× 1600mm	2900× 1500× 1600mm	3200× 1800× 1700mm	3400× 1900× 1800mm

DB-600-800

电脑控制高速连卷背心袋制袋机 (双道)
Computer Control High-Speed Vest Rolling Bag-Making Machine(Double Layer)



用途 /USE

本机生产的高、低密度聚乙烯膜袋,适用于超市购物、商场购物。

The high and low density polyethylene film bags produced by the machine are applied to shopping in the supermarkets,shops and markets.

特点 /CHARACTERISTICS

本机特别设计为点断连卷平口袋及点断连卷背心袋双用机。利用电脑控制,步进(伺服)定长系统使封切尺寸误差小。装置电眼追踪使印刷袋之图案位置精确,可选择电脑数控调整袋子长度,印刷袋一有问题本机自动停机并报警。

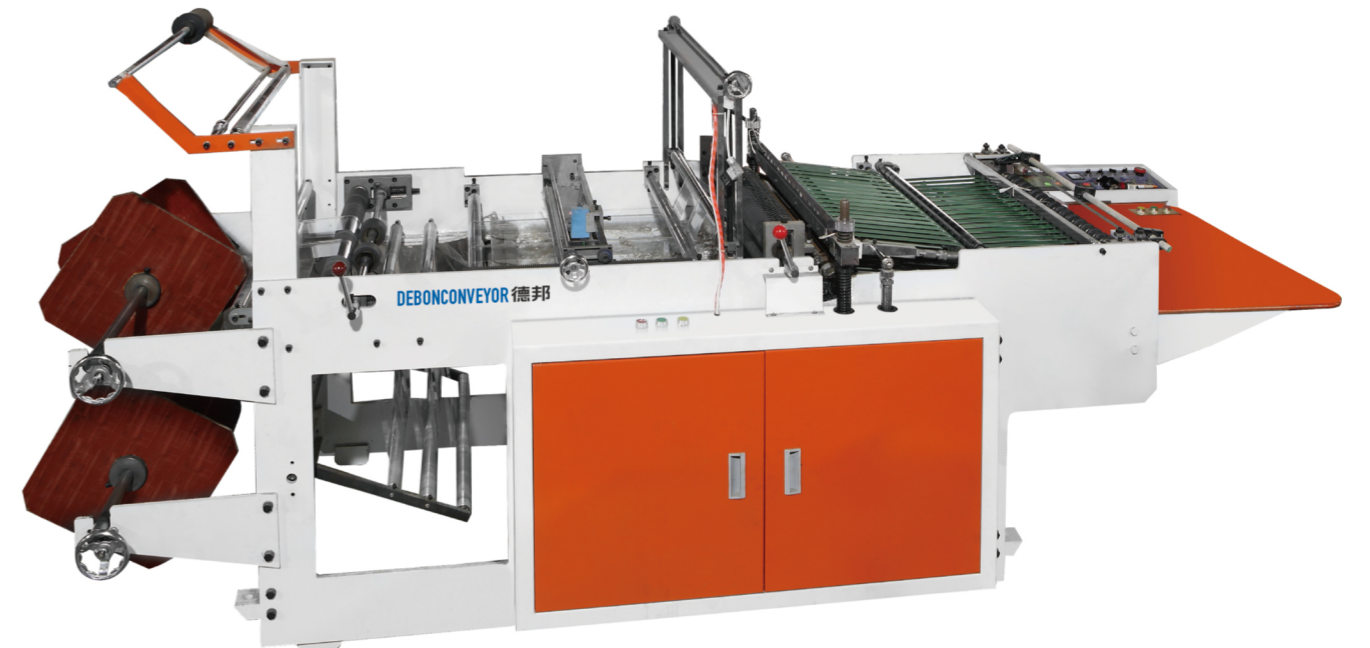
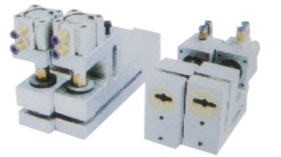
This machine a specially-designed point-cut rolling dual-purpose for vest&flat bags, is controlled by a computer, the step(servo)setting length system reduces the sealing-cutting dimensions errors, and the installation of photoelectric eyes track help make the position of figure of printing bags accurately, the computer numerical control can be selected to adjust the length of bag the machine will automatically stop and sound a warning if there is something wrong with the printing bags.

主要技术参数 /MAIN TECHNICAL PARAMETER

型号	Model	DB-500	DB-600	DB-800
制袋最大宽度	Max.Width of bag-making	400mm	500mm	700mm
制袋最大长度	Max.Length of bag-making	1200mm	1200mm	1200mm
制袋厚度	Bag-making Thickness	0.008-0.15mm	0.008-0.15mm	0.008-0.10mm
制袋速度	Speed of bag-making	40-120pc/min	40-120pc/min	40-120pc/min
电机功率	Power of motor	1.1kw	1.1kw	1.5kw
电热功率	Electric Heating power	1.2kw	1.6kw	2.2kw
装箱尺寸	Packing Dimensions(Lx Wx H)	3600x 1200x 1700mm	3400x 1300x 1700mm	3600x 1500x 1700mm
机器重量	Machinery weight	800Kg	900Kg	1000Kg

DB-600-1000

电脑热切制袋机
Computer Heat-Cutting Bag-Making Machine



特点 /CHARACTERISTICS

本机适用于 BOPP、OPP 热收缩膜等材料的热合热封切,制作袜子袋、毛巾袋、面包袋、饰品袋的理想设备,本机肯有电脑定长、光电跟踪,性能稳定(铸铁结构),速度快等特点。具备自动上胶、自动打孔、热花边等功能。

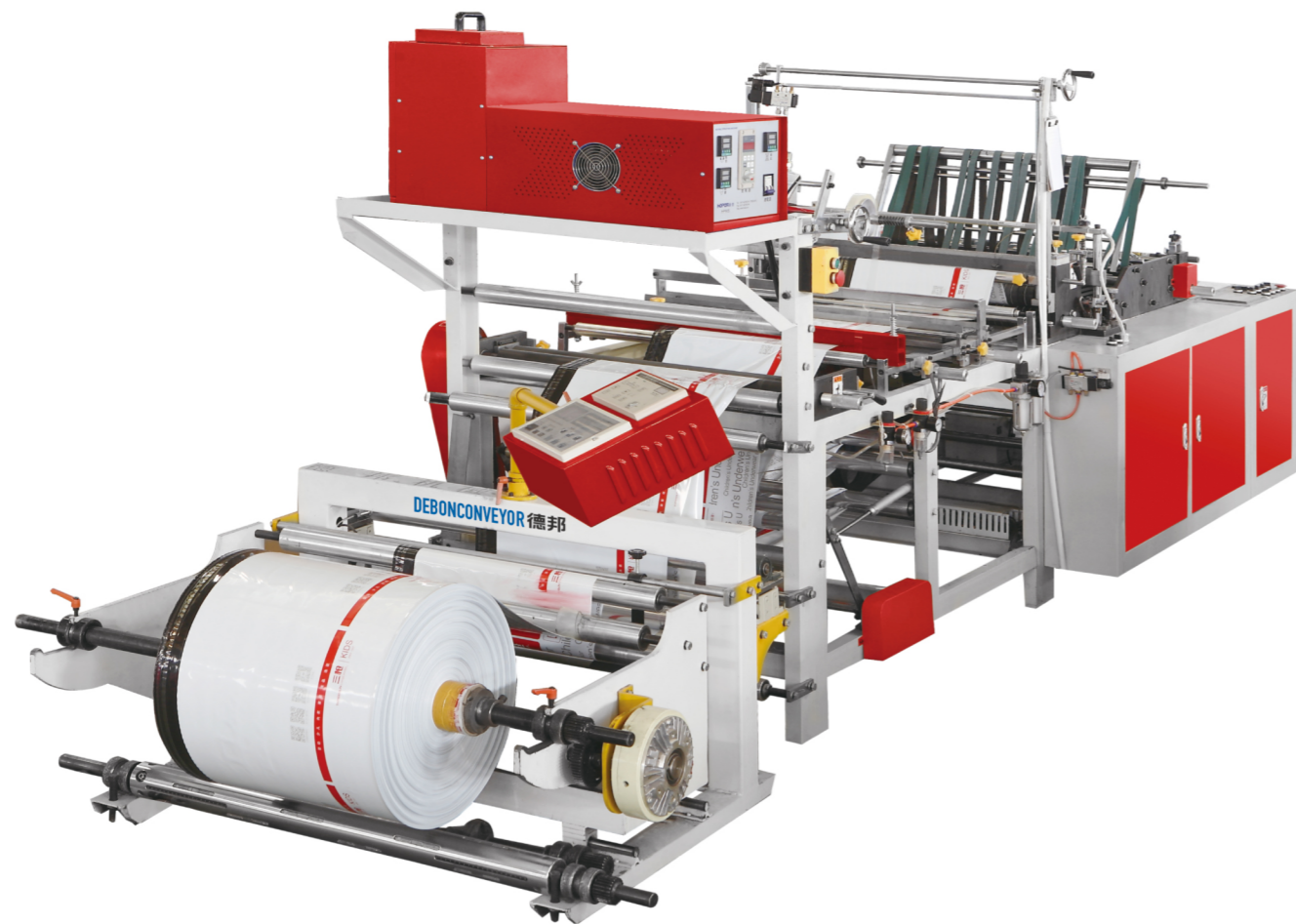
This machine is suitable for heat-sealing and heat-cutting such materials as BOPP, OPP thermal contracting films, etc. And it is a kind of ideal equipment for making socks bag, towel bag, bread bag and ornament bag, etc. The machine has such characteristics as length fixing by computer, photoelectric tracking stable performance(cast-iron structure) and highspeed, etc. And has such functions as automatic gluing, automatic punching and lace heat-sealing,etc.

主要技术参数 /MAIN TECHNICAL PARAMETER

机型	Model	DB-650	DB-800	DB-1000
制袋宽度	Producing width	50-600mm	70-600mm	80-900mm
制袋长度	Producing length	100-600mm	150-750mm	150-950mm
制袋速度	Producing speed	30-140pcs/min	30-120pcs/min	30-100pcs/min
薄膜厚度	Thickness of film	0.01-0.10mm	0.01-0.10mm	0.01-0.10mm
总功率	Main power	4.5kw	5kw	5.5kw
机器重量	Weight	1100kg	1300kg	1400kg
机械尺寸	Machine dimension(Lx Wx H)	4700x 1250x 1850mm	4700x 1400x 1850mm	5000x 1600x 1850mm
装箱尺寸	Packing dimension(Lx Wx H)	3000x 1400x 2050mm	3000x 1500x 2050mm	3300x 1670x 2050mm

DB-800/1000

快递袋上胶制袋一体机
Delivery Bag Making Machine



特点 / CHARACTERISTICS

该机型采用了国内先进的追色电眼，灵敏度高，抓色精准，色标消失会自动停机报警；背封、喷胶、断胶、封切多工序一次性完成，具有速度快、产量高、损耗低等多种性能。是专业生产各快递公司专用快递袋的机型，如：京东商城专用快递袋，顺丰快递专用快递袋，申通快递专用快递袋，圆通快递专用快递袋等。

This machine adopts domestic advanced color recovery electric eye, high sensitivity, accurate grasp color, color will disappear automatically shut down and alarm; back seal, spray glue, glue, sealing and cutting completed more than one step, high speed, high yield and low loss properties. Is specializing in the production of various courier companies dedicated courier bag models, such as: Jingdong mall dedicated courier bags, SF express special delivery bags, STO special delivery bags, Yuantong express special delivery bags.

主要技术参数 / MAIN TECHNICAL PARAMETER

型号	Model	DB-800	DB-1000
制袋速度	Bag making speed	50-140pcs/min	50-140pcs/min
制袋宽度	Width of the bag	0.03-0.15mm	0.03-0.15mm
总功率	The total power	5kw	5kw
机器尺寸	The machine size	5800×1300×1400mm	5800×1500×1400mm

DB 系列凹版印刷机 Series Flexographic Printing Machine



主要技术参数 / MAIN TECHNICAL PARAMETER

机型	印刷宽度	印刷长度	印刷速度	版材厚度	机械尺寸
Model	Printing width	Printing length	Printing speed	Printing thickness	Machine dimension
DB-4600	600mm	560mm	60m/min	2.38mm	4800×1600×2400mm
DB-4800	800mm	760mm	60m/min	2.38mm	4800×1800×2400mm
DB-41000	1000mm	960mm	60m/min	2.38mm	4800×2000×2400mm

DB600-1000

系列高速电脑凹版印刷机
Series High-Speed Computer Gravure
Printing Machine



用途 /USE

本机适用于印刷具有优良性能的卷状塑料薄膜、OPP、无纺布、PVC、薄皮革、纸张、铝箔及布等各种软包装主，是鞋袋、背心袋的理想印刷设备。

This machine is suitable for printing roll plastic, film, OPP, nonwoven cloth, PVC, thin leather, paper, aluminum foil, cloth and various soft packages with excellent performance and it is a kind of ideal printing equipment for wine box, shoe bag and vest bag.

主要技术参数 /MAIN TECHNICAL PARAMETER

机型	Model	DB-600	DB-800	DB-1000
印刷宽度	Width of Printing	600mm	800mm	1000mm
印刷速度	Printing Speed	10-120m/min	10-120m/min	10-120m/min
对版精度	Version Accuracy	<0.15mm	<0.15mm	<0.15mm
印刷长度	Length of Printing	200-1250mm	200-1250mm	200-1250mm
料卷直径	Diameter of Roll	600mm	600mm	600mm
总功率	Total Power	18kw	21kw	24kw
外形尺寸	Outline Dimension	8800×1400×2000mm	8800×1600×2000mm	8800×1800×2000mm

DB-600-1000

型系列凹版印刷机
Gravure Printing Machine



主要技术参数 /MAIN TECHNICAL PARAMETER

机型	Model	DB-600	DB-800	DB-1000
印刷宽度	Printing Width	600mm	800mm	1000mm
印刷长度	Printing Length	240-850mm	240-850mm	240-850mm
印刷最高速度	Max. Printing Speed	50m/min	50m/min	50m/min
对版精度	Format Precision	±0.25mm	±0.25mm	±0.25mm
主机功率	Power of main motor	4kw	4.5kw	5.5kw
风机功率	Fan Power	0.19kw/group	0.19kw/group	0.19kw/group
电热功率	Heating Power	3.2kw	3.2kw	3.2kw
外形尺寸	Overall Dimension	8800×1200×1700mm	8800×1400×1700mm	8800×1600×1700mm

DB-D 高速塑料再生造粒机

High Speed Recycling Machine



特点 / CHARACTERISTICS

本机组可将经过清洗、破碎的废旧聚乙烯、聚丙烯塑料加工成粒子，作为再次成型加工的原料。本机组的挤出机减速器采用20CrMnTi合金钢制造的硬齿面减速螺杆、料筒采用38CrMoA1A合金钢经氮化处理，使用寿命长。本机组由主副挤出机、水槽、合金旋刀切粒机组成。也可根据用户需要配备干燥吹风机。

This assembly can be used to process clean or old broken PP/PE plastics into granules that can be reused as the raw materials. The helical gear reducer made of 20CrMnTi alloy steel is applied to the extruder and the screw and cylinder are made of 38CrMoA1A alloy steel after nitrogenization treatment, which is durable. It consists of main extruder and sub-extruder, water tank and cutting part with alloy rotary cutter. Besides it is optional to be collocated with drying fan.

主要技术参数 / MAIN TECHNICAL PARAMETER

型号	Model		SJ-D135/110	SJ-D115/90
螺杆直径	Diameter of screw	Main screw	135mm	115mm
		Sub-screw	110mm	90mm
螺杆长径比	L/D Ratio	Main screw	20:1	20:1
		Sub-screw	12:1	12:1
电机功率	Power of motor	Main screw	37Kw	30Kw
		Sub-screw	15Kw	11Kw
螺杆转速	Speed of screw		10-120r/min	10-120r/min
总加热功率	Total heating power		60Kw	50Kw
生产能力	Capacity		150-200Kg/h	120-150Kg/h
切粒机功率	Power of cutter		3Kw	2.2Kw
重量	Weight		5000Kg	3000Kg
安装尺寸	Dimensions		6500×4000×1500mm	6000×3500×1500mm

HQ-150/300

料混炼造粒机

Plastic Grind Milling Granulator

特点 / CHARACTERISTICS

- 1.对聚氯乙烯、聚丙烯、低密度聚乙烯、高密度聚乙烯、线性低密度聚乙烯等各种软质塑料膜、袋、丝、带、片、管的废料与下脚料的回收，投入再生产。
- 2.粉碎、混合、着色能一次进行。
- 3.低温造粒，基本不破坏原料分子结构，不损坏物理性能。

1. Recycle the waste materials and leftover bits and pieces of various flexible plastic films, bags, filament, ribbons, pieces, and pipes such as polyvinyl chloride, polypropylene, polyethylene of higher density, and linear polyethylene of lower density, and put them into reproduction.
2. Milling, mixture and staining can be processed all in one.
3. Granulate at lower temperature, don't damage molecular structure of materials basically, and don't damage physical performance.

主要技术参数 / MAIN TECHNICAL PARAMETER

机器筒体容量	Drum Volume	150L	300L
生产能力	Production Capacity	60-80Kg/h	120-160Kg/h
主电机功率	Power of Main Electric Motor	18.5kw	37w
机器外形尺寸	Overall Dimension	1500×700×1400mm	1800×900×1500mm
机器重量	Weight	1000kg	1800kg



X625 液压摇臂式截料机

Hydraulic Pressure Punching Machine



F-1/3 塑料粉碎机

Plastic Grind Machine



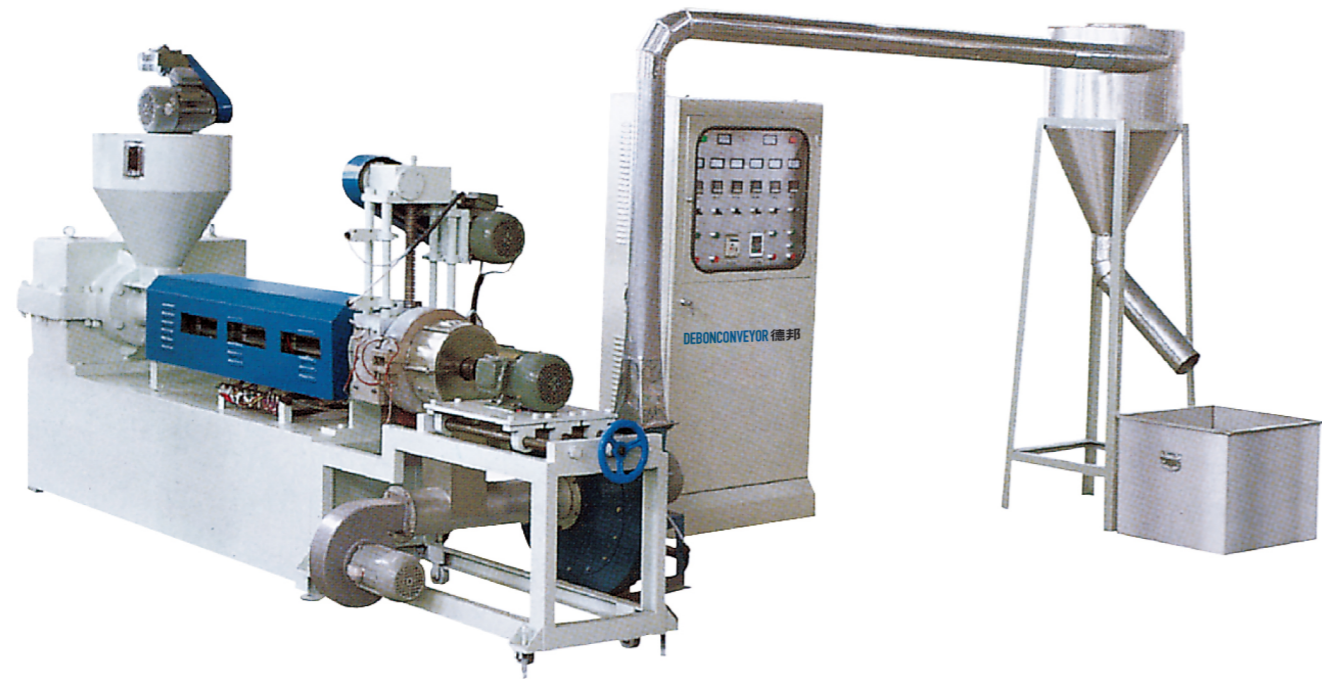
主要技术参数 / MAIN TECHNICAL PARAMETER

型号	Model	X625
电机功率	Motor power	1.1Kw
工作压力	Working pressure	10T
压板冲程	Clamp travel	5-75mm
工作台与压板距离	Distance between workable and clamp	65-150mm
机重	Weight	800Kg
外形尺寸	Outlining diameter(Lx Wx H)	1000×800×1300MM

型号	Model	F-1	F-3	F-5	F-6
产量	Output	60-100kg/h	120-200kg/h	200-280kg/h	250-350kg/h
电机	Motor	4kw	7.5kw	11kw	15kw
进料口尺寸	Size of material	250×200mm	400×300mm	500×350mm	650×400mm
机重	Weight	0.3T	0.4T	0.6T	0.8T
刀数	Quantity of tool	5pcs	5pcs	8pcs	10pcs
外形尺寸	Outline diameter(Lx WxH)	850×600×1300mm	1000×750×1400mm	1500×900×1700mm	1700×1200×1800mm

DB-B90/100/110/120

风冷造粒机
Air Cooled Granulator



特点 / CHARACTERISTICS

本机以 HDPE、LDPE 废膜为原料挤出风冷热切成颗粒，质量好、天气孔、无水分，该机配置强制喂料器，快速换网器，自动控温仪。

This raw materials like waste films of HDPE are extruded through the extruder, and then are cooled through wind and cut hotly into granules, featuring in fine quality, bubble free and moisture free. The machine is equipped with a forced feeder, fast mesh changer and automatic thermocontroller.

主要技术参数 / MAIN TECHNICAL PARAMETER

机型	Model	DB-B90	DB-B100	DB-B110	DB-B120
螺杆直径	Screw L/D Ratio	Φ90	Φ100	Φ110	Φ120
螺杆长径比	Major Diameter Ratio of Screw	L/D 20:1 -22:1	L/D 20:1 -22:1	L/D 20:1 -22:1	L/D 20:1 -22:1
螺杆转速	Rational Speed of Screw Stem	10-100r/min	10-100r/min	10-100r/min	10-100r/min
主电机功率	Main Motor Power	22kw	30kw	37kw	37kw
产量	Output	68kg/h	95kg/h	120kg/h	120kg/h
整机重量	Weight of overall	2000kg	2100kg	2200kg	2500kg
占地尺寸	Cover dimensions (L×W×H)	8000×1200×1800mm	8200×1600×1800mm	8500×1600×1800mm	8800×1600×1800mm

AUXILIARY MODEL

辅助机型



折边收卷机
Hem Rewinding Machine



自动吸料机
Auto Loader



混色机
Mixer



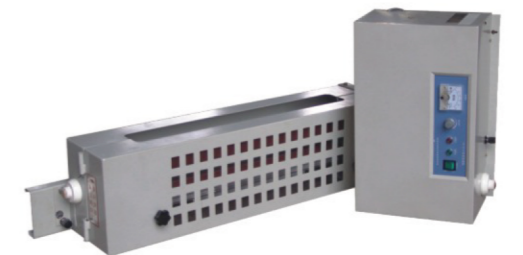
螺杆和料筒
Screw And Barrel



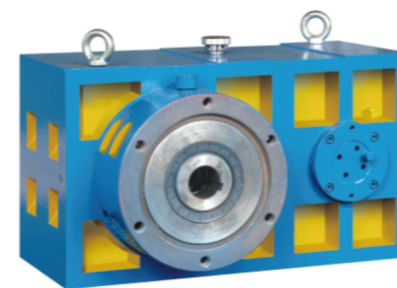
快速换网器
Fast Screen Changer



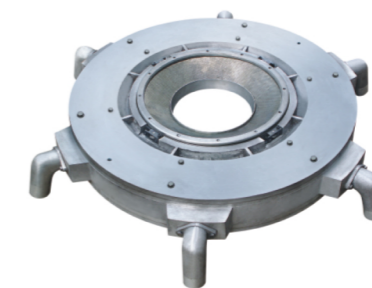
数码电晕处理机
Digital Corona Treater



高强度硬齿面减速箱
High-Strength Hard Tooth Surface Reduction Gearbox



双风口风环
Double Air Vent Air Ring



模头
Die Head

